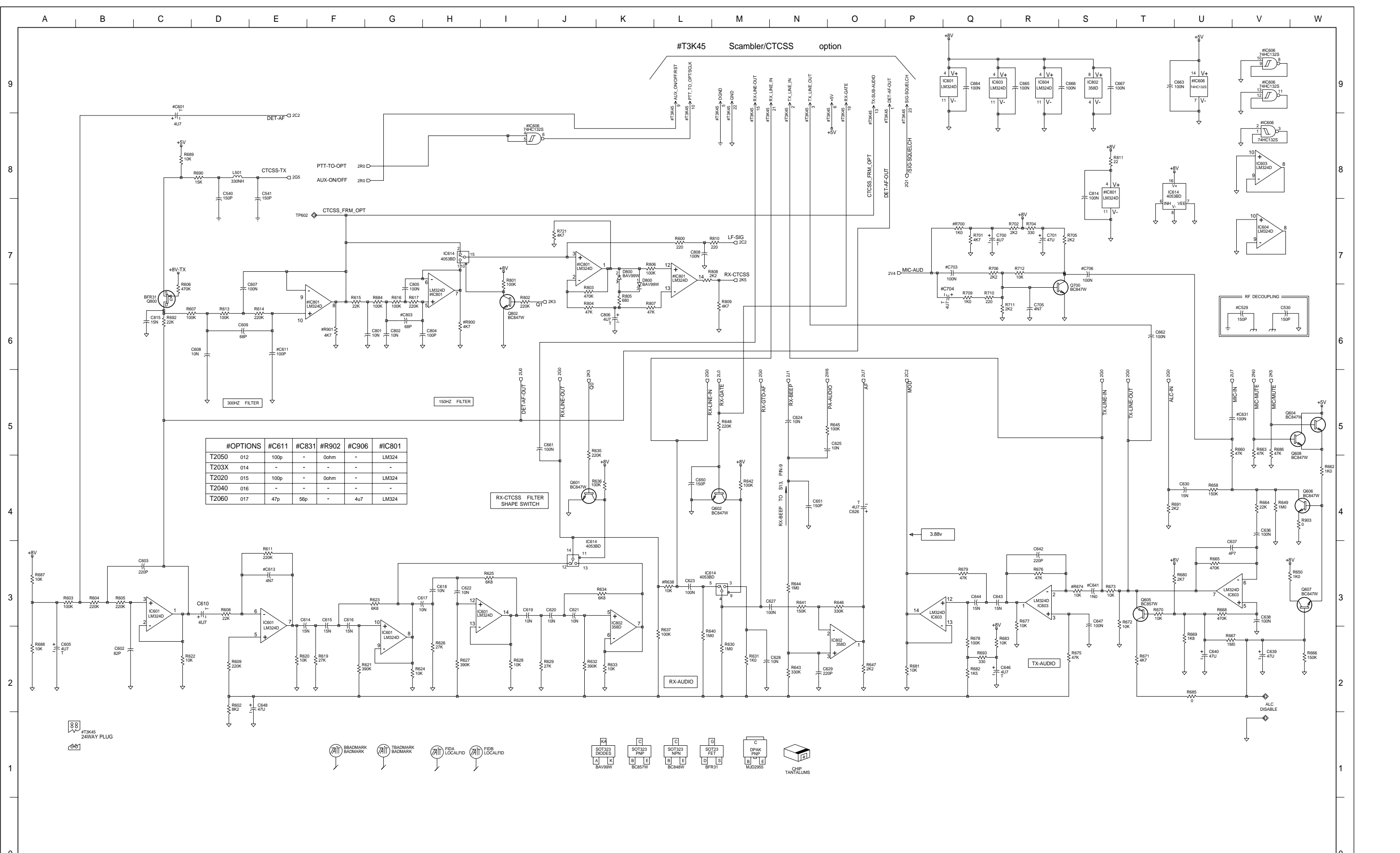


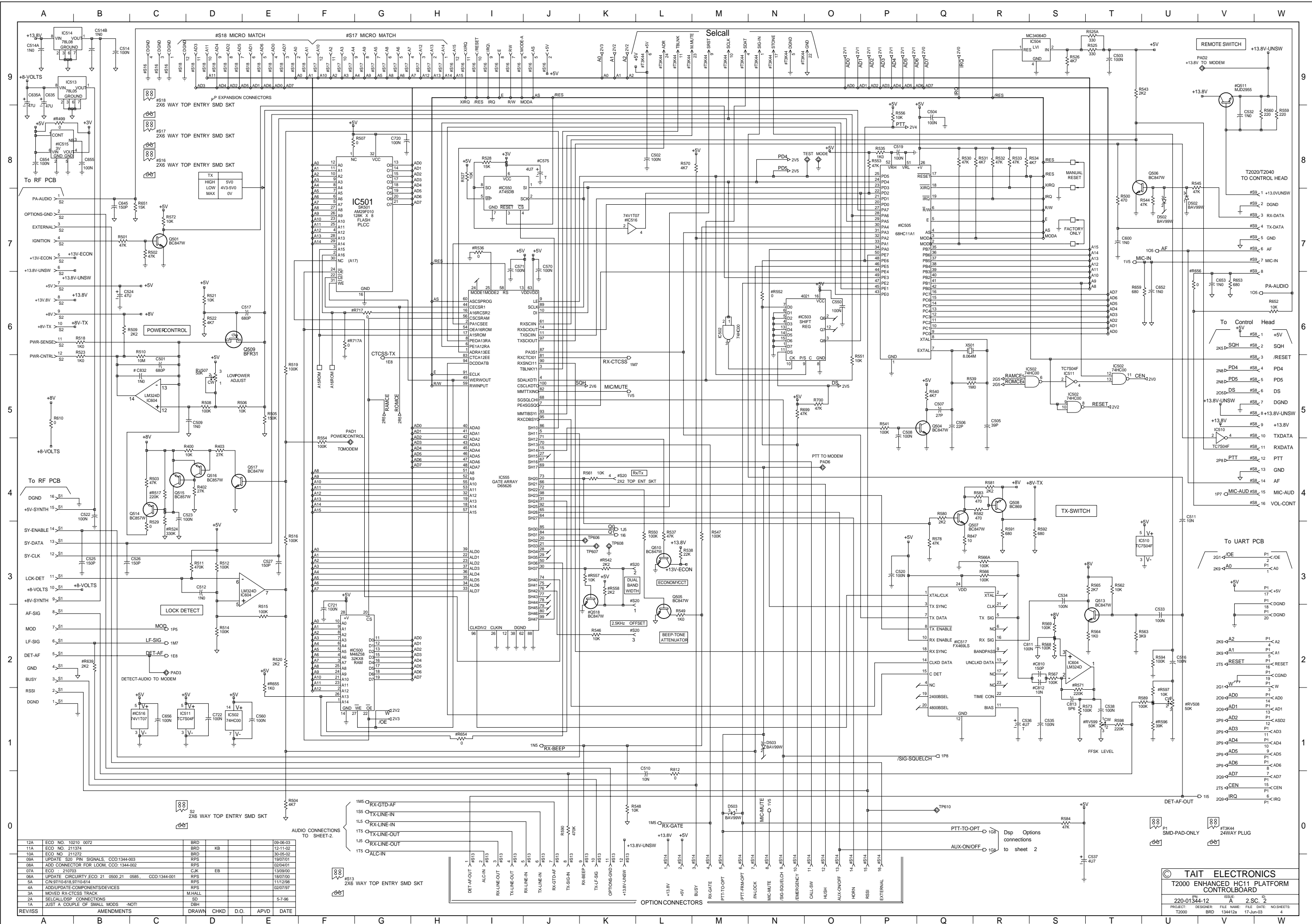
#T3K45 Scrambler/CTCSS option



#OPTIONS	#C611	#C831	#R902	#C906	#IC801
T2050	012	100p	-	0ohm	LM324
T203X	014	-	-	-	-
T2020	015	100p	-	0ohm	LM324
T2040	016	-	-	-	-
T2060	017	47p	56p	4u7	LM324

12A	ECO NO 10210 0072	BRD			09-06-03	
11A	ECO NO.211374	BRD	KB		12-11-02	
10A	ECO NO. 211272	BRD			30-05-02	
09A	UPDATE S20 PWR SIGNALS. CCO:1344-003	RPS			19/07/01	
08A	ADD CONNECTOR FOR LOOM. CCO:1344-002	RPS			02/04/01	
07A	ECO : 210703	CJK	EB		13/09/00	
06A	UPDATE CIRCUITRY. ECO: 21 0600 21 0685 . CCO:1344-001	RPS			18/07/00	
5A	CON:57104618.57104614	RPS			11/12/98	
4A	ADD/UPDATE COMPONENTS/DEVICES	RPS			02/07/97	
3A	MOVED RX-CTCSS TRACK			M.HALL		
2A	SEL/CALL/DRP CONNECTIONS			SD	5-7-96	
1A	JUST A COUPLE OF SMALL MODS -NOT!			DBH		
REV/ISS	AMENDMENTS	DRAWN	CHKD	D.O.	APVD	DATE

© TAIT ELECTRONICS
 T2000 ENHANCED HC11 PLATFORM
 AUDIO CIRCUITRY
 PROJECT: T2000 DESIGNER: BRD FILE NAME: 134412a DATE: 17-JUN-03
 ISSUE: A 2 SC. 1
 NO. SHEETS: 4



REV/ISS	AMENDMENTS	DRAWN	CHKD	D.O.	APVD	DATE
12A	ECO NO. 10210 0072		BRD			09-06-03
11A	ECO NO. 211374		BRD			12-11-02
10A	ECO NO. 211272		BRD			03-05-02
09A	UPDATE S20 FPN SIGNALS, CCO-1344-003		RPS			19/07/01
08A	ADD CONNECTOR FOR LOOM, CCO-1344-002		RPS			02/04/01
07A	ECO : 210703		CJK		EB	13/09/00
06A	UPDATE CIRCUITRY ECO 21 0500 21 0585, CCO-1344-001		RPS			18/07/00
5A	CONVERT 618.97/10/14		RPS			11/12/98
4A	ADD/UPDATE COMPONENTS/DEVICES		RPS			02/07/97
3A	MOVED RX-CTCSS TRACK		M HALL			
2A	SELCALLS CONNECTIONS		SD			5-7-96
1A	JUST A COUPLE OF SMALL MODS - NOT!		DBH			

TAIT ELECTRONICS
T2000 ENHANCED HC11 PLATFORM CONTROL BOARD
 PROJECT: T2000 BRD: 134412a FILE DATE: 17-Jun-03
 ISSUE: 2
 ID: 2.SC.2
 NO SHEETS: 2

OPTION	DESCRIPTION	#C529	#C601	#C613	#C631	#C641	#C706	#C810	#C812	#IC503	#IC505	#IC517	#Q511	#R542	#R552	#R571	
X2L217G	T2017 CONVENTIONAL DUAL BAND	150p	470n	Tant	4n7	NF	1n	100n	NF	NF	MC14021	MC68HC11E1	NF	MJD2955	2k2	NF	0E
X2L061	T2020 CONVENTIONAL (T2020-XXX-X60 ONLY)	150p	470n	Tant	4n7	100n	1n	NF	NF	NF	NF	MC68HC11A1	NF	MJD2955	2k2	0E	0E
X2L220	T2020 CONVENTIONAL SINGLE BAND	150p	470n	Tant	4n7	100n	1n	NF	NF	NF	NF	MC68HC11E1	NF	MJD2955	2k2	0E	0E
X2L222	T2020 CONVENTIONAL DUAL BAND	150p	470n	Tant	4n7	100n	1n	NF	NF	NF	NF	MC68HC11E1	NF	MJD2955	2k2	0E	0E
X2L223	T2020 CONVENTIONAL DUAL BAND	150p	470n	Tant	4n7	100n	1n	NF	NF	NF	NF	MC68HC11E1	NF	MJD2955	2k2	0E	0E
X2L224	T2020 CONVENTIONAL #C529 NOT FITTED	NF	470n	Tant	4n7	100n	1n	NF	NF	NF	NF	MC68HC11A1	NF	MJD2955	2k2	0E	0E
X2L225	T2020 CONVENTIONAL NZFS	150p	470n	Tant	4n7	100n	1n	NF	NF	NF	NF	MC68HC11A1	NF	MJD2955	0E	0E	0E
X2L226C	T2020 CONVENTIONAL NO PRE EMPHASIS / NO DE EMPHASIS	150p	470n	Tant	33k	100n	47n	NF	NF	NF	NF	MC68HC11E1	NF	MJD2955	2k2	0E	0E
X2L230	T2030 TRUNKED STANDARD	150p	4u7	Tant	4n7	NF	1n	100n	NF	10n	MC14021	MC68HC11E1	FX469LS	NF	2k2	NF	220k
X2L235	T2035 TRUNKED STANDARD	150p	4u7	Tant	4n7	NF	1n	100n	NF	10n	MC14021	MC68HC11E1	FX469LS	NF	2k2	NF	220k
X2L236	T203X TRUNKED ALT PRE EMPHASIS	150p	4u7	Tant	4n7	NF	1n	100n	150p	150p	MC14021	MC68HC11E1	FX469LS	NF	2k2	NF	470k
X2L237	T203X TRUNKED	150p	4u7	Tant	4n7	NF	1n	100n	NF	10n	MC14021	MC68HC11E1	FX469LS	NF	2k2	NF	220k
X2L240	T2040 TRUNKED STANDARD	150p	4u7	Tant	4n7	100n	1n	NF	NF	10n	NF	MC68HC11E1	FX469LS	MJD2955	2k2	0E	220k
X2L241	T2040 TRUNKED ALT PRE EMPHASIS	150p	4u7	Tant	4n7	100n	1n	NF	150p	150p	NF	MC68HC11E1	FX469LS	MJD2955	2k2	0E	470k

OPTION	DESCRIPTION	#R638	#R639	#R674	#R717	#R717A	#RV599
X2L217G	T2017 CONVENTIONAL DUAL BAND	10k	2k2	10k	NF	0E	NF
X2L061	T2020 CONVENTIONAL (T2020-XXX-X60 ONLY)	10k	2k2	10k	NF	0E	NF
X2L220	T2020 CONVENTIONAL SINGLE BAND	10k	2k2	10k	NF	0E	NF
X2L222	T2020 CONVENTIONAL DUAL BAND	10k	2k2	10k	NF	0E	NF
X2L223	T2020 CONVENTIONAL DUAL BAND	10k	2k2	10k	NF	0E	NF
X2L224	T2020 CONVENTIONAL #C529 NOT FITTED	10k	2k2	10k	NF	0E	NF
X2L225	T2020 CONVENTIONAL NZFS	0E	NF	10k	NF	0E	NF
X2L226C	T2020 CONVENTIONAL NO PRE EMPHASIS / NO DE EMPHASIS	10k	2k2	180k	NF	0E	NF
X2L230	T2030 TRUNKED STANDARD	10k	2k2	10k	0E	NF	50k
X2L235	T2035 TRUNKED STANDARD	10k	2k2	10k	0E	NF	50k
X2L236	T203X TRUNKED ALT PRE EMPHASIS	10k	2k2	10k	0E	NF	50k
X2L237	T203X TRUNKED	10k	2k2	10k	0E	NF	50k
X2L240	T2040 TRUNKED STANDARD	10k	2k2	10k	0E	NF	50k
X2L241	T2040 TRUNKED ALT PRE EMPHASIS	10k	2k2	10k	0E	NF	50k

© TAIT ELECTRONICS
T2000 ENHANCED HC11 PLATFORM
CONTROLBOARD

IPN: 220-01344-12 ISSUE: A ID: 2.S.C. 3

PROJECT: DESIGNER: BRD FILE NAME: 134412a FILE DATE: 17-Jun-03 NO.SHEETS: 4

REV/ISS	AMENDMENTS	DRAWN	CHKD	D.O.	APVD	DATE
A						

MICROPHONE TYPE	#C704	#C703	#R700
Dynamic (std)	4u7 Tant	NF	NF
Electret	NF	100N	1k

SUB AUDIBLE SIGNAL OPTION	#R900	#C803	#IC801	#R901	#R902
X2L217G	4k7	68p	LM324	4k7	NF
X2L061	4k7	68p	LM324	4k7	NF
X2L22XX	4k7	68p	LM324	4k7	NF
X2L23X	NF	68p	NF	NF	NF
X2L24X	NF	68p	NF	NF	NF
X2L242	NF	4p7	NF	NF	NF

MEMORYTYPE	#IC500	#IC516	#R654	#R655
NVRAM	M48Z58Y	NF	0E	NF
"SRAM (NOTE: SRAM requires 1200 Channel option, refer to 'MEMORY SIZE' TABLE)"	W24655S	FITTED	NF	1k

MEMORY SIZE	#IC550	#C575	#IC515	#R499	#R527	#R536
1200 Channel 3V Serial Flash Option	AT45DB011	FITTED	FITTED	NF	10k	0E
1200 Channel 5V Serial Flash Option	AT45D011	FITTED	NF	0E	10k	0E
100 Channel	NF	NF	NF	NF	NF	NF

POWERRAMPUP/DOWN	#R517	#C832	#R524
Std	220k	1n	330k

SELCALL SIGNALLING LEVEL	#RV508	#R596	#R597
Fixed (std)	NF	39k	10k
Adjustable	50k	NF	NF

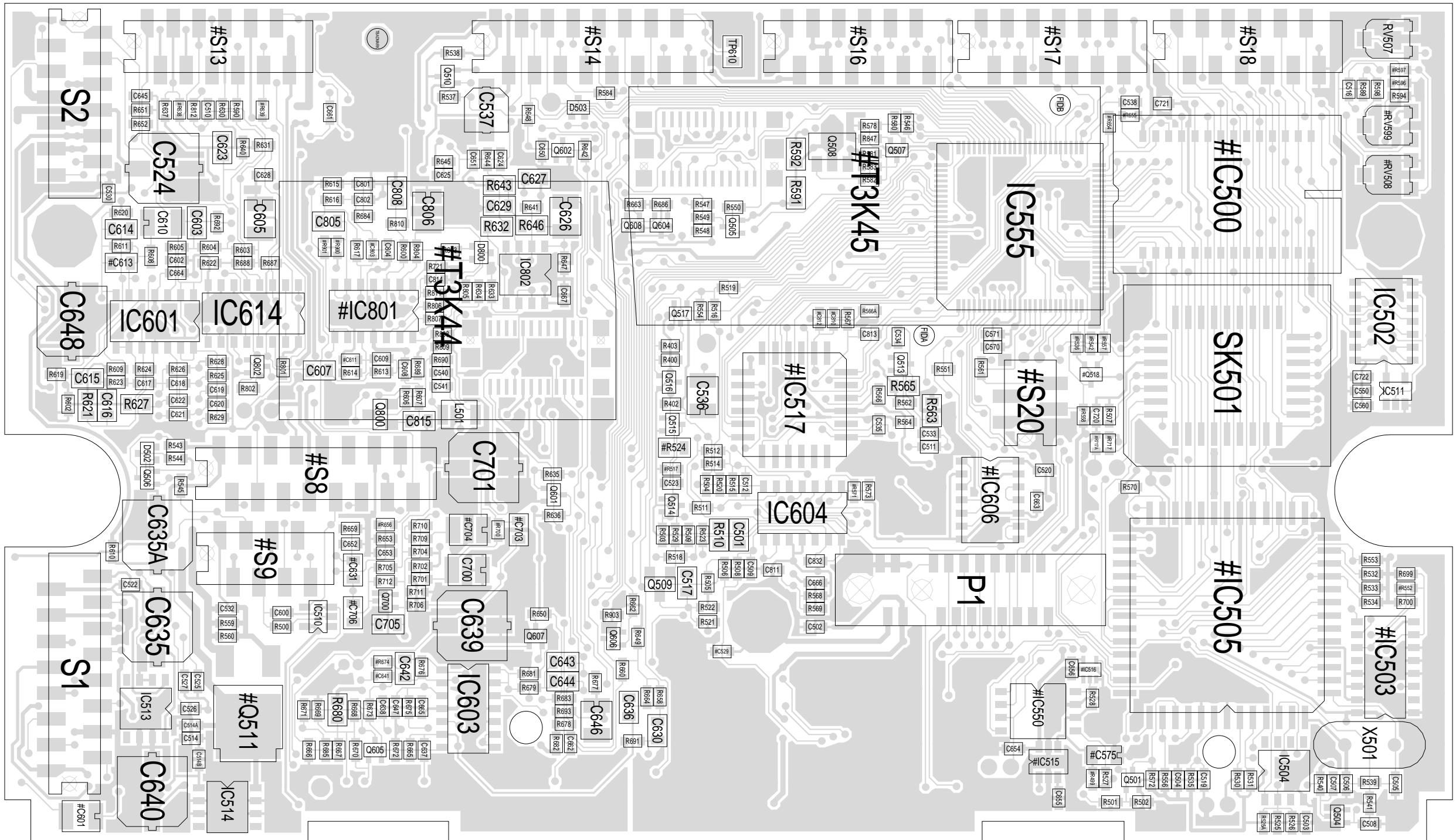
BANDWIDTH OPTION	#R557	#Q518	#R558	#S20
Single Bandwidth	NF	NF	NF	NF
Dual Bandwidth	2k2	NF	NF	FITTED
Inverted Dual Bandwidth	10k	FITTED	2k2	FITTED
NZFS Dual Bandwidth	NF	NF	NF	FITTED

© TAIT ELECTRONICS			
T2000 ENHANCED HC11 PLATFORM CONTROLBOARD			
IPN:	ISSUE:	ID:	
220-01344-12	A	2.SC. 4	
PROJECT:	DESIGNER:	FILE NAME:	FILE DATE:
	BRD	134412a	17-Jun-03
			NO.SHEETS:
			4

REV/ISS	AMENDMENTS	DRAWN	CHKD	D.O.	APVD	DATE

15
14
13
12
11
10
9
8
7
6
5
4
3
2
1

A
B
C
D
E
F
G
H
J



TAIT ELECTRONICS IPN: 220-01344-12 ISS: A ID: 1.TA DATE: 4 Jun 2003
T2K ENHANCED PCB LAYOUT - TOP SIDE

15

14

13

12

11

10

9

8

7

6

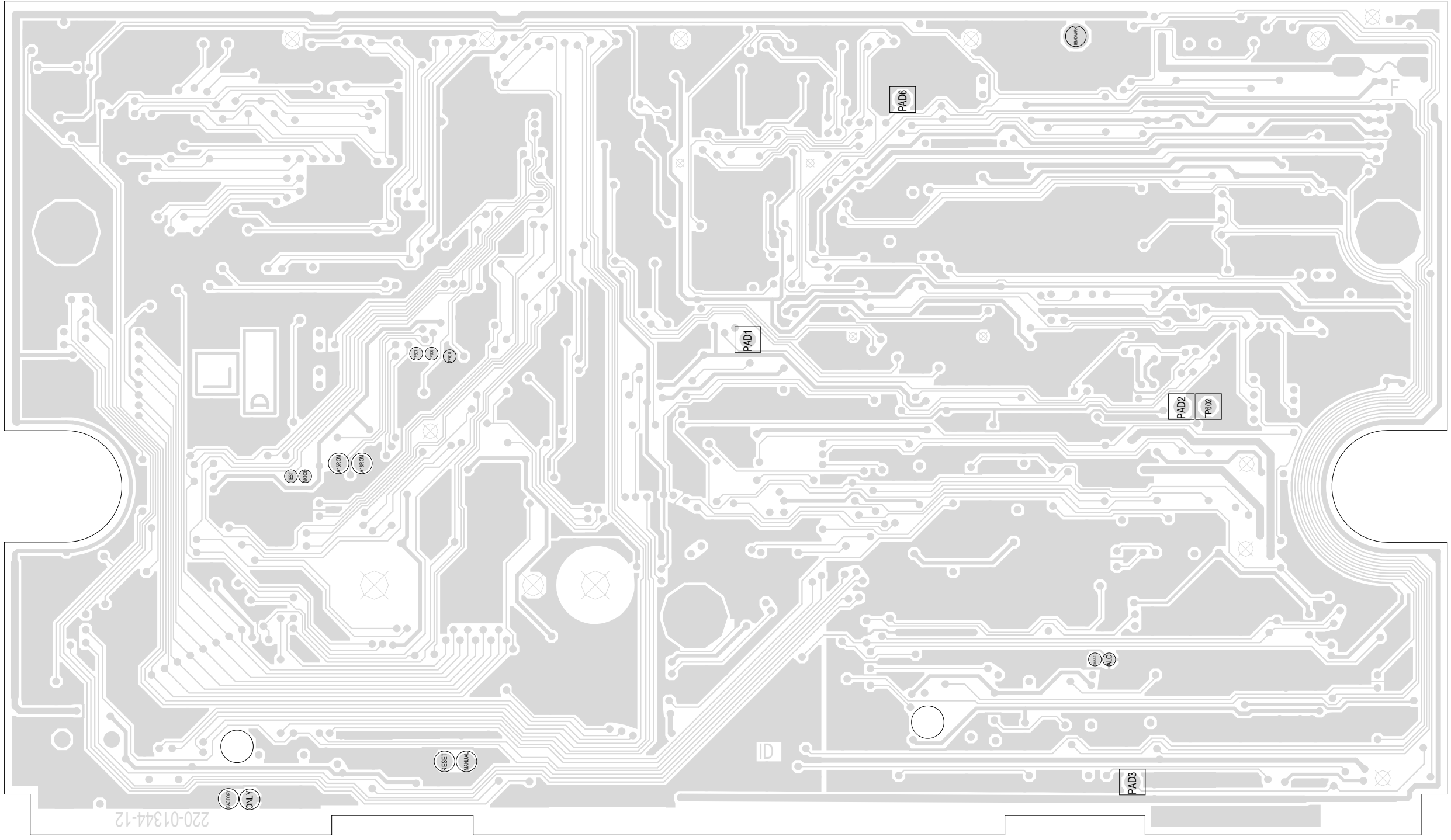
5

4

3

2

1



A

B

C

D

E

F

G

H

J

220-01344-12

FACTORY ONLY

RESET

UNIVERSAL

TAIT ELECTRONICS	IPN:	ISS:	ID:	DATE:
	220-01344-12	A	2.BA	4 Jun 2003
T2K ENHANCED PCB LAYOUT - BOTTOM SIDE				

Scale:2.3:1 ; Rotation: 90 degrees